

A black and white photograph of a modern architectural interior. In the foreground, a dark, minimalist staircase with wide steps leads upwards. To the right, a wall with a series of horizontal, slightly curved lines creates a textured effect. Strong, sharp shadows from architectural elements like overhangs and walls are cast across the surfaces, creating a dramatic play of light and dark. The overall composition is geometric and minimalist.

KALLY PANEK

ARCHITECTURE PORTFOLIO

TABLE OF CONTENTS

Professional Projects

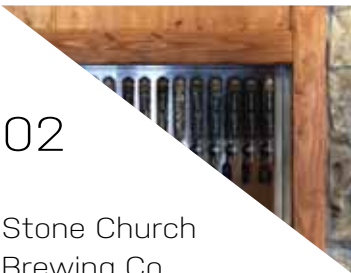
01

Uptown Commons Containers



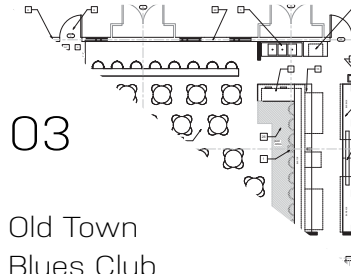
02

Stone Church Brewing Co.



03

Old Town Blues Club



Academic Projects

04

Vincent Gap



05

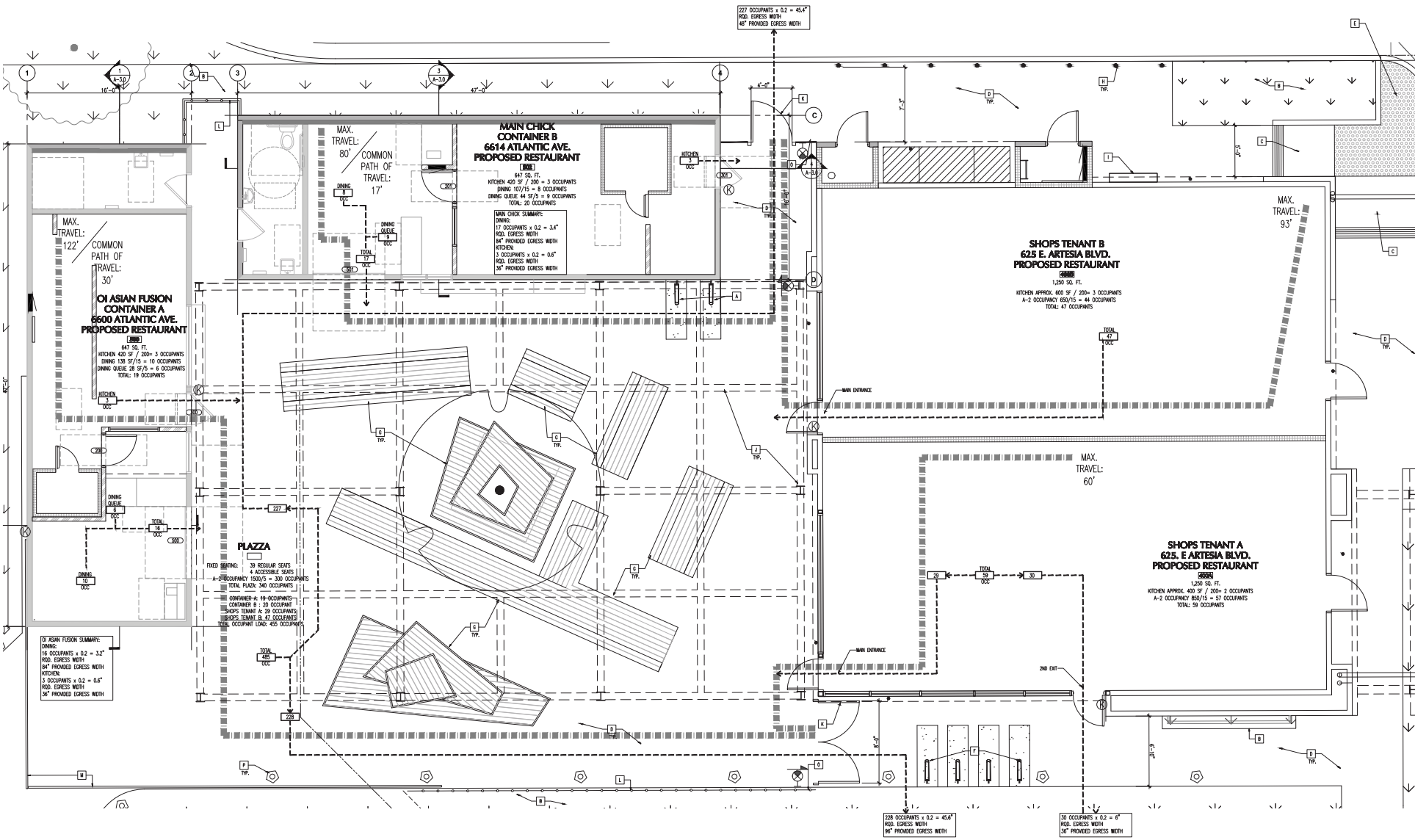
Lincoln STEAM Academy



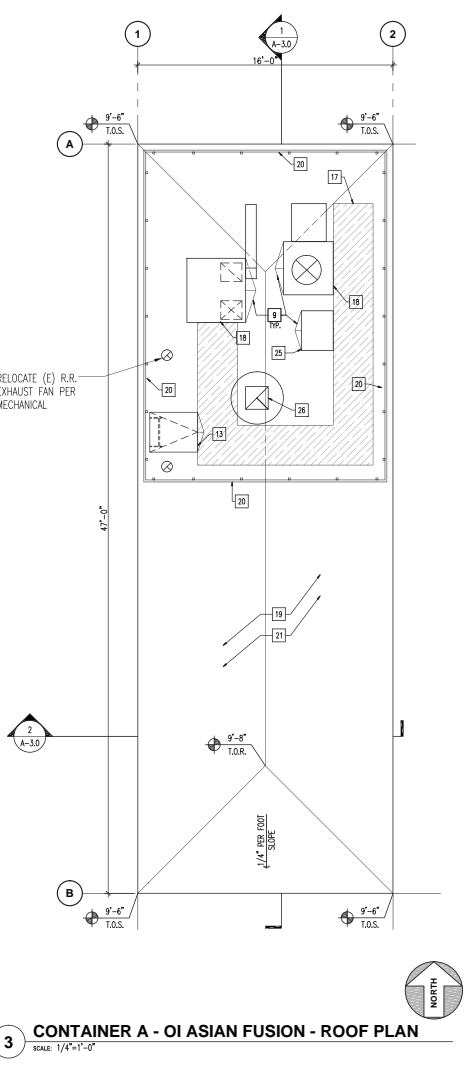
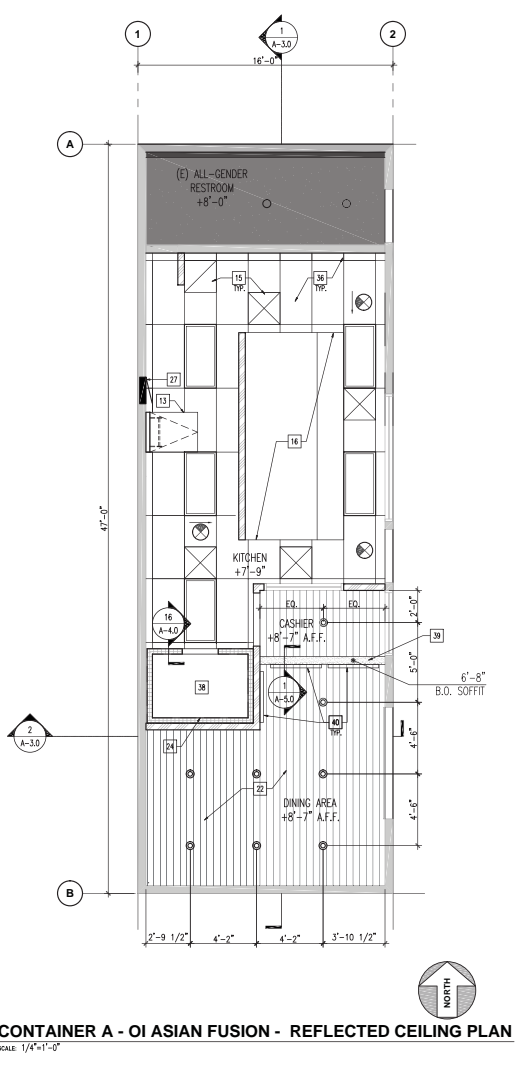
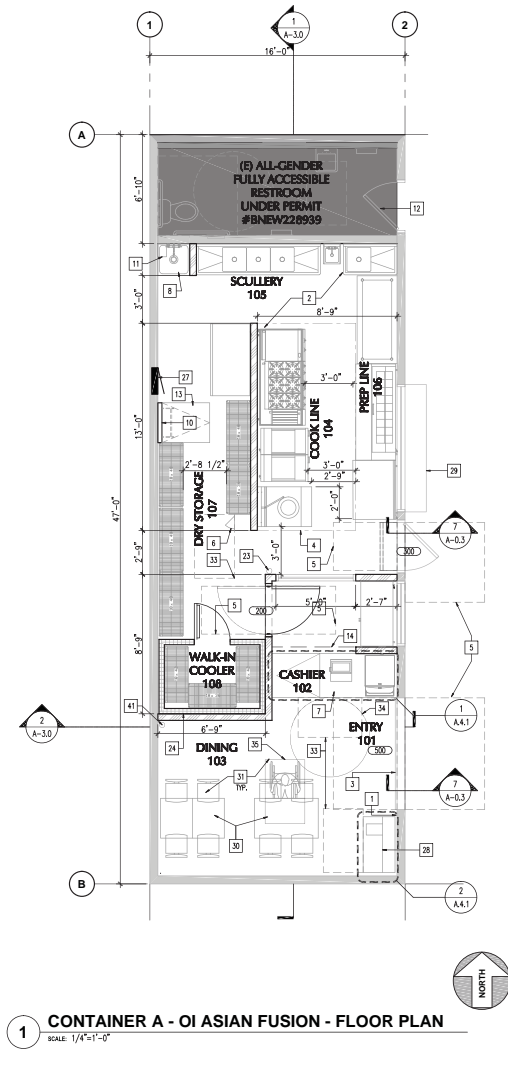
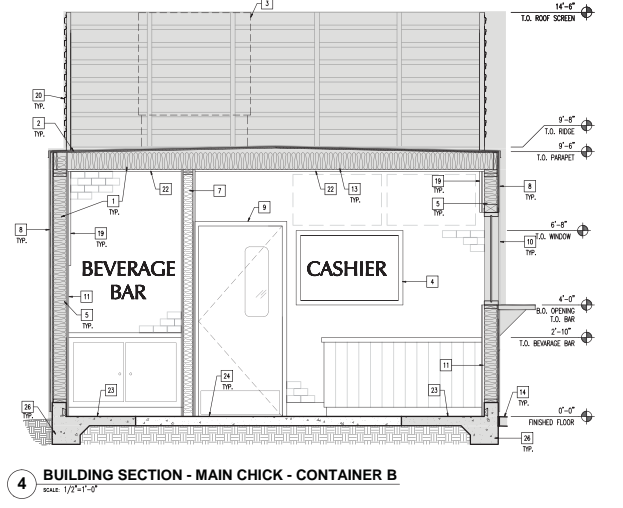
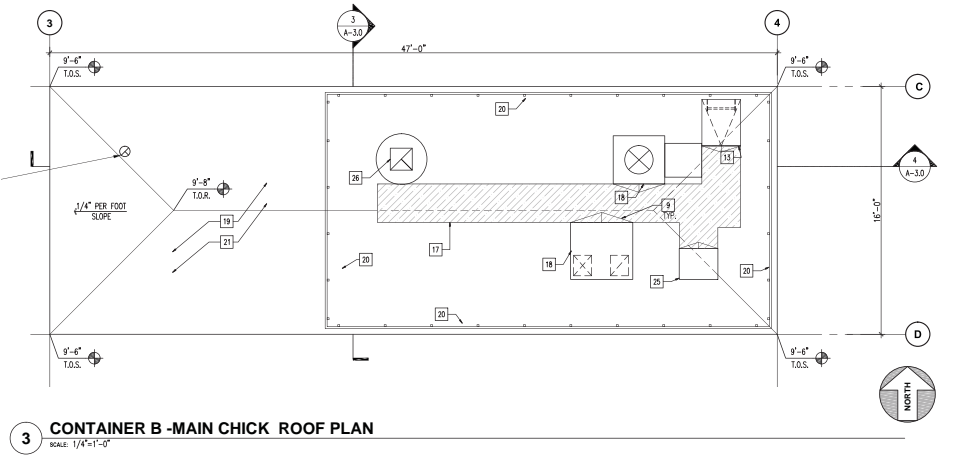
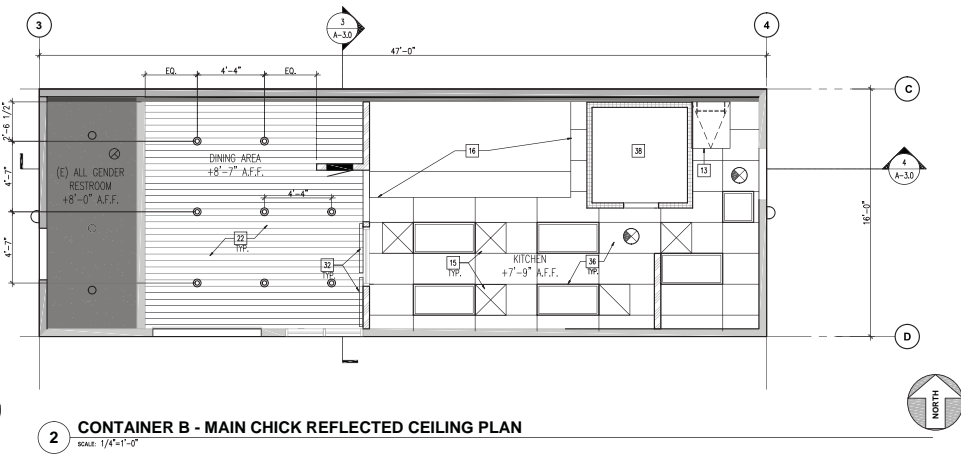
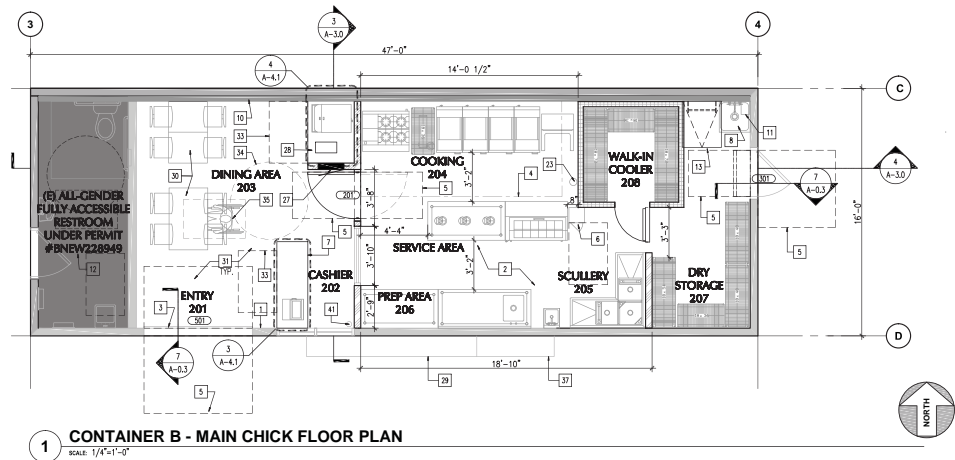
Uptown Commons Shipping Containers

Long Beach, California
Project Projected Opening: - Fall 2020

While it wasn't cost effective to use actual shipping containers, we were able to bring the vision to life using wood construction and metal paneling. These 'containers' were part of a larger development that surrounds a common plaza with seating, shade and greenery. I was mostly involved in the tenant improvement of the project and was able to meet with the tenants multiuple times to help bring their vision and individual branding to the interior of the spaces.



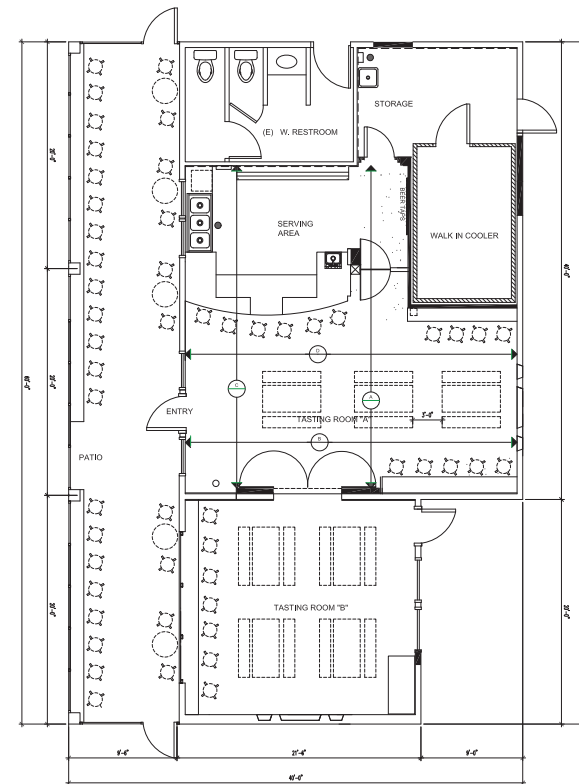
Egress Plan



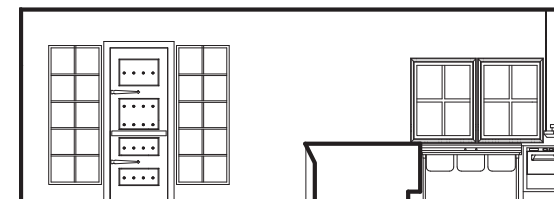
Stone Church Brewing

Temecula, California
Project Start: 7/11/2018
Project Grand Opening: 2/20/2019

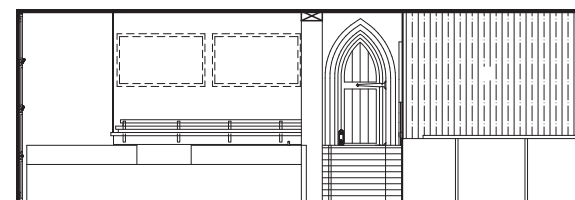
This project is the second location for Stone Church Brewing Company. We were tasked to redesign the space to accommodate two tasting rooms, a walk-in cooler and serving spaces. I was involved in all aspects of the design process, from schematic to construction documents.



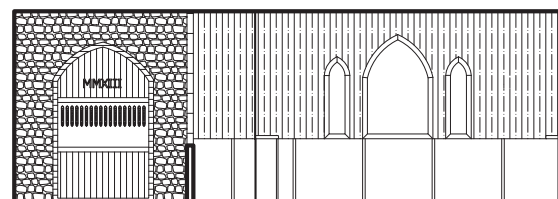
FLOOR PLAN



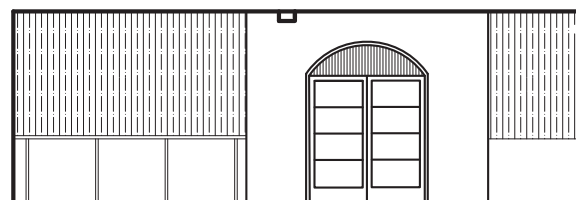
TASTING ROOM ELEVATION C



TASTING ROOM ELEVATION D



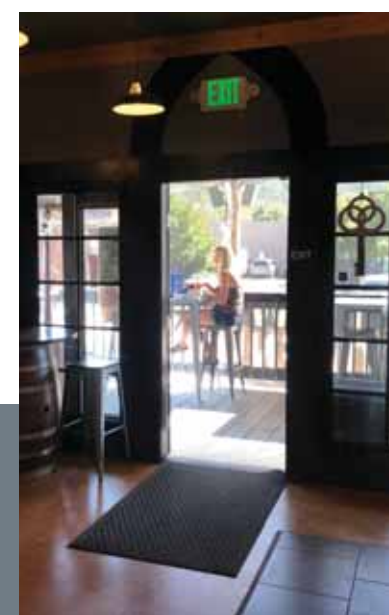
TASTING ROOM ELEVATION A



TASTING ROOM ELEVATION B



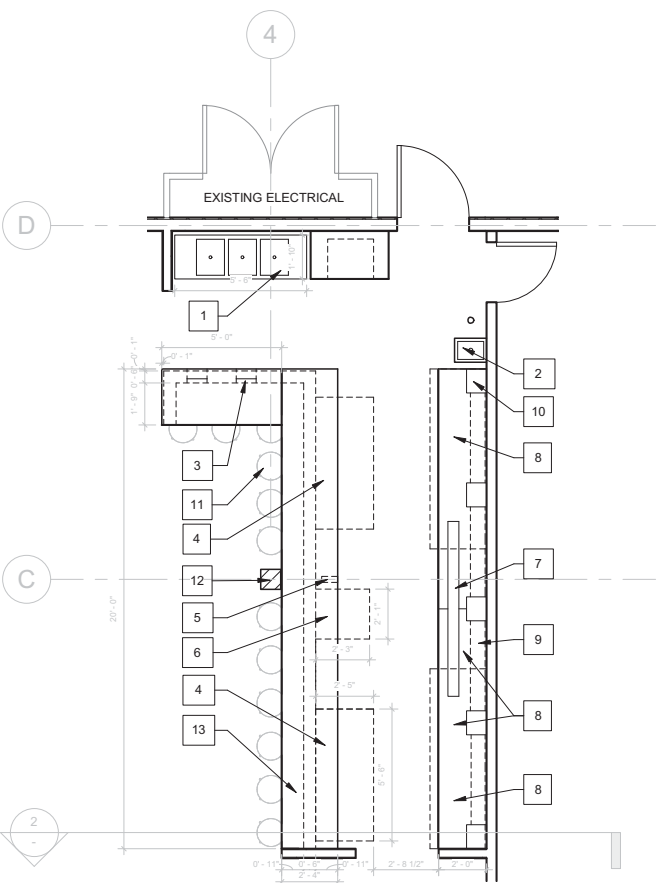
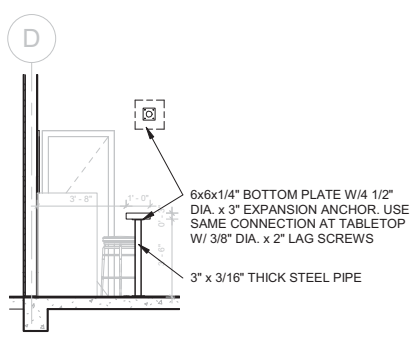
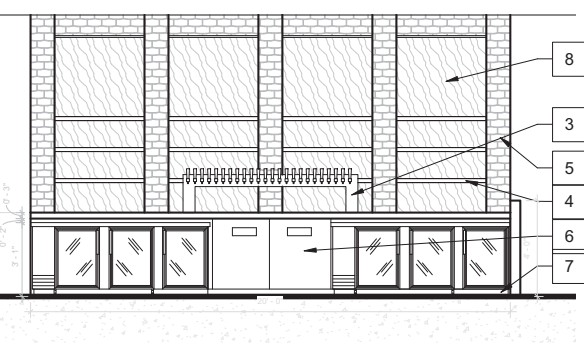
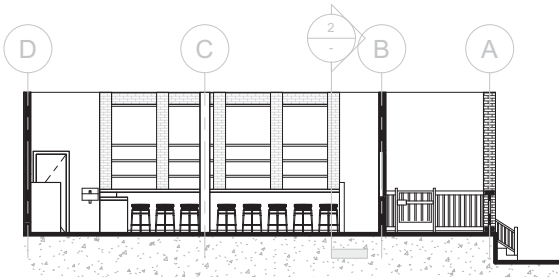
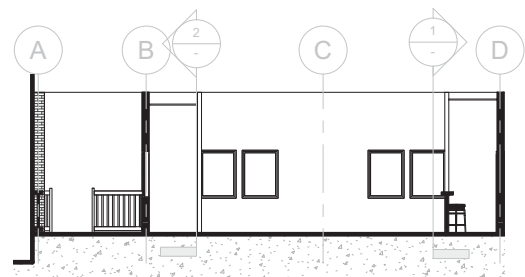
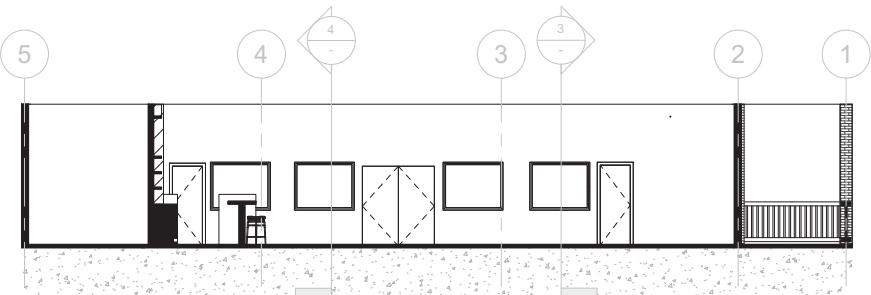
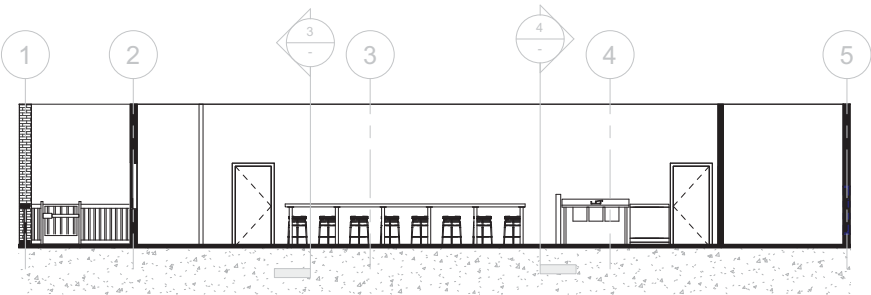
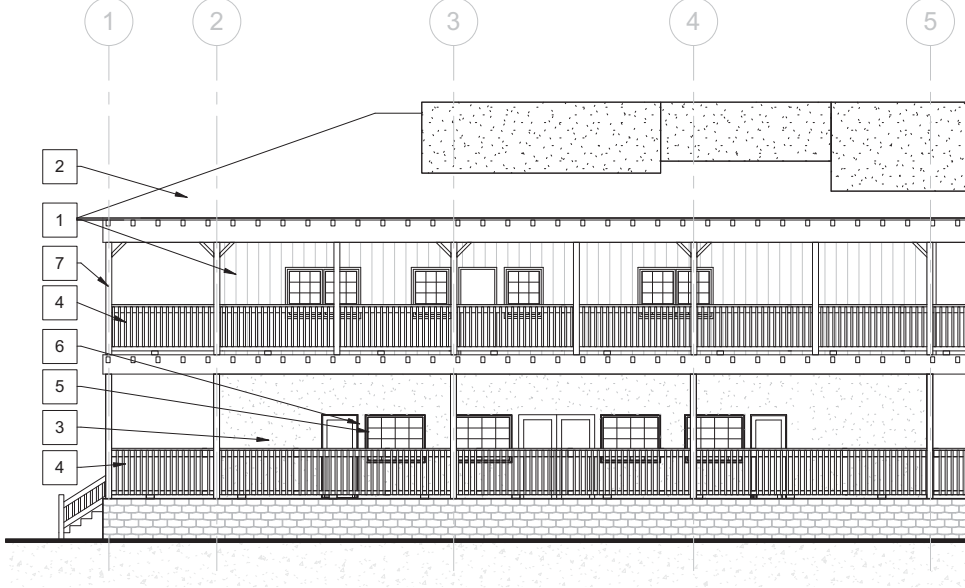
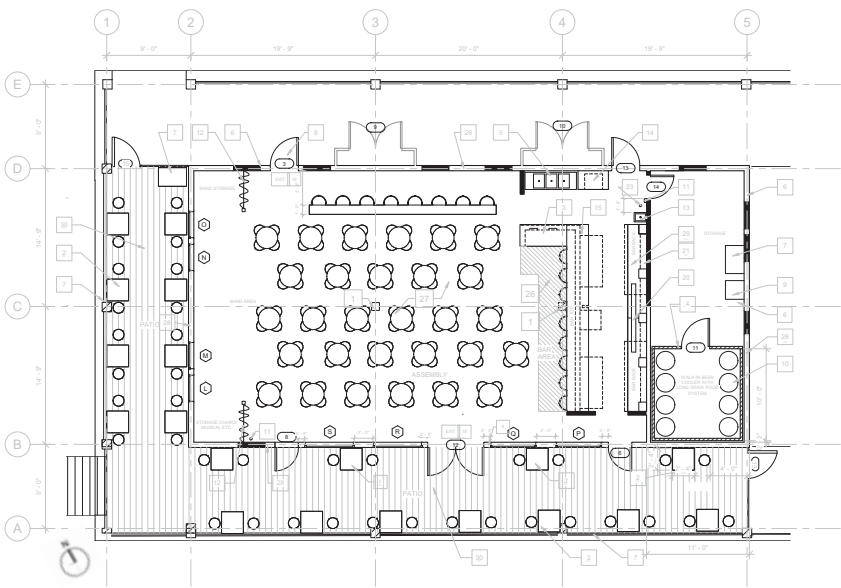
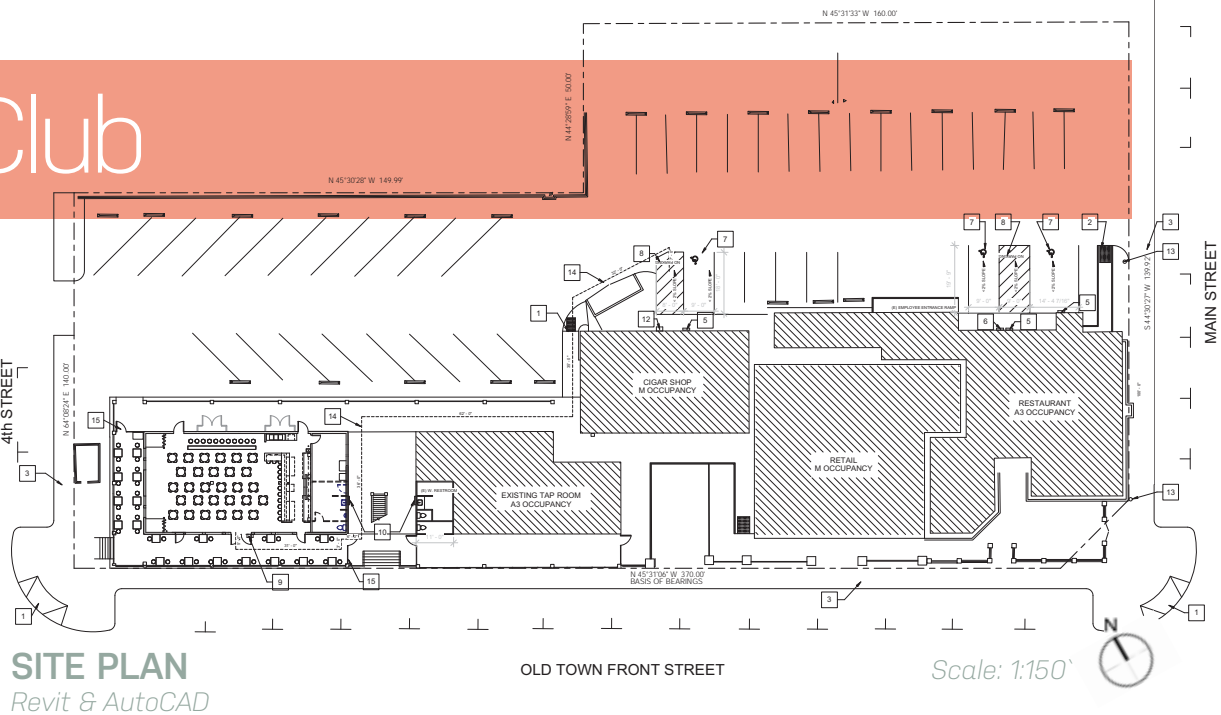
Project Completion



Old Town Blues Club

Temecula, California
Project Design Start Date: 2/25/2019
Project Open Now.

The tenant commissioned us to remodel the interior of the his club to better accommodate live music and smoother circulation. Through our redesign we were also able to add more space to the bar and more effectively utilize the patio space.



Vincent Gap

Third Year - Fall 2016

This project is a place of rest created through a scaled refinement of material, detail and light. There is a transitional relationship between exterior and interior, nature and man, weariness and rest. The Pacific Crest Trail, an arduous and breathtakingly beautiful hiking trail, runs straight through the site and was the basis for the project; to create a retreat both for the hikers as well as for visitors. The circulation through the project is a journey, starting at the lowest point and culminating at the Chapel.



The program includes housing units for travelers, lounge spaces to rest and relax, an outdoor movie theatre, a post office, dining hall, library and at the top of the circulation journey is the chapel.



Circulation Path

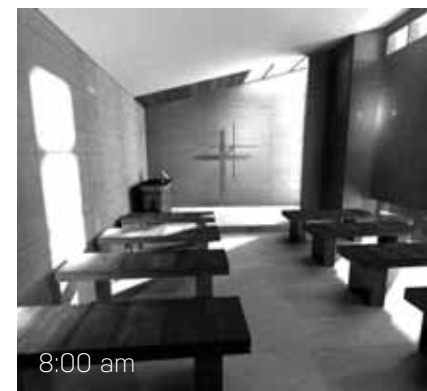
Light Studies



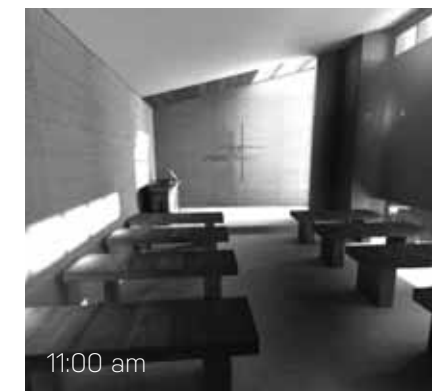
Church View



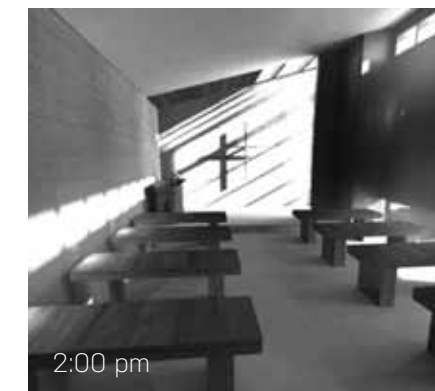
Church Wall Section



8:00 am



11:00 am



2:00 pm



5:00 pm

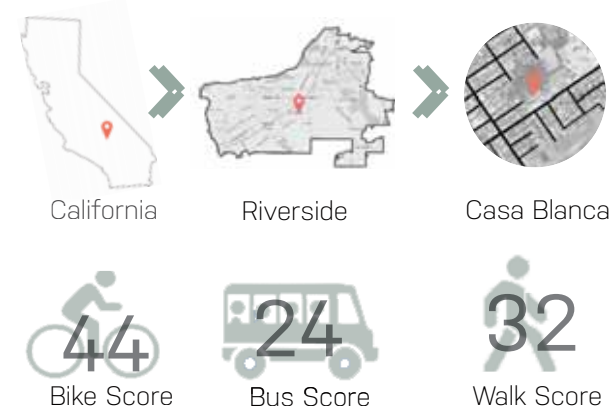
Lincoln STEAM Academy

Fourth Year - Fall 2017

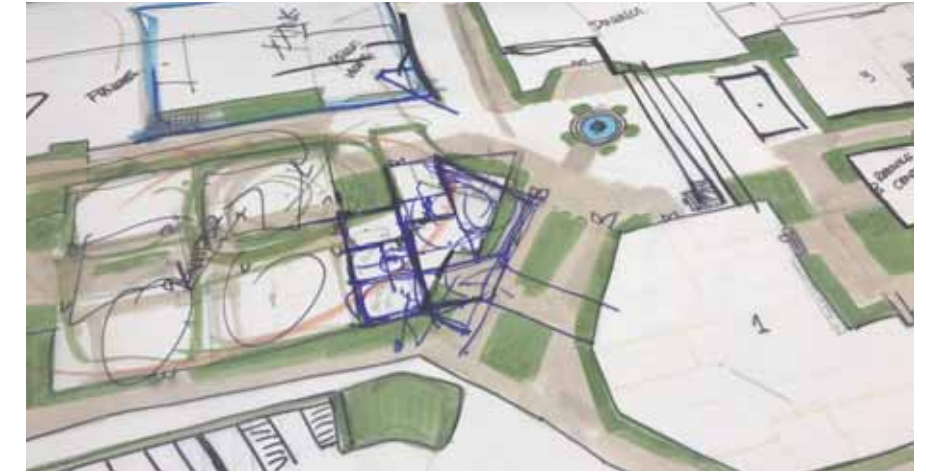
Our project was to design a STEAM middle school in a small town known for very low graduation rates & low income families in Riverside, California. This town has seen its share of violence over the years and our journey during the design process was to create a school that was a place of refuge from the chaos. A place where academics could successfully take a front seat in the lives of the children. Lincoln STEAM Academy is designed to help the children feel at ease while at school and at the same time provide



an engaging and vibrant atmosphere. This school aims to help the students grow into contributing adults who are able to change their futures, their neighborhoods and maybe even the world.



Design Process



Lincoln STEAM Academy (continued)



Procession



1 The entrance is designed to be welcoming and funnels students into the courtyard. It is also designed for safety as it can be closed off completely during school hours; requiring all guests to enter through the side door which leads to the main offices.

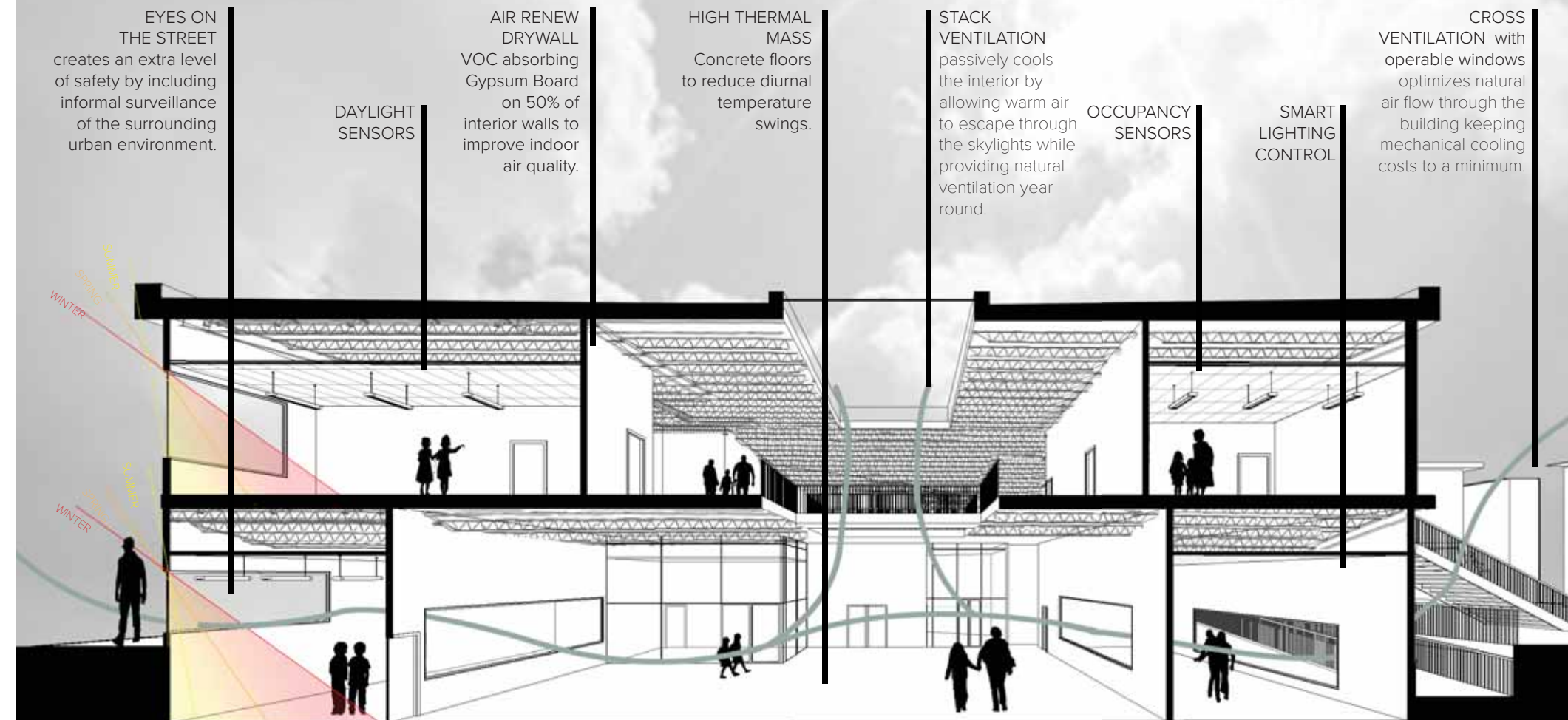


2 The courtyard is the next step in the procession and is a space of transition and gathering. It can be used for student events, pep-rallies, morning line-ups and even for outdoor teaching days. Everything is accessible from this point; the gymnasium, cafeteria, offices and classrooms.



3 This is the final point in the procession and is where the resource center and classes are located. The resource center is in the center of the classrooms and is accessible from both the ground and second floors.

Design Strategies



Light Study Model

A project from school
to explore the impact of
light on a space.

My model is using
material and light to lead
the person through the
space.



Thank you for your time and consideration!